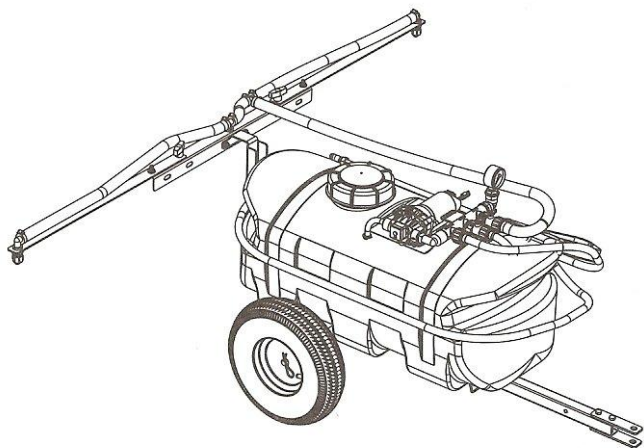


OWNER'S MANUAL

Model: TR-15-STD-TSC (2137633)

(15 Gallon Lawn & Garden Trailer Sprayer)



BEFORE RETURNING THIS PRODUCT
FOR ANY REASON, PLEASE CALL

1-800-831-0027

IF YOU SHOULD HAVE A QUESTION OR
EXPERIENCE A PROBLEM WITH YOUR
FIMCO INDUSTRIES PRODUCT:

1-800-831-0027

BEFORE YOU CALL, PLEASE HAVE THE
FOLLOWING INFORMATION AVAILABLE:
SALES RECEIPT & MODEL NUMBER. IN MOST
CASES, A FIMCO INDUSTRIES EMPLOYEE CAN
RESOLVE THE PROBLEM OVER THE PHONE.

General Information

Thank you for purchasing this product. The purpose of this manual is to assist you in operating and maintaining your lawn & garden trailer sprayer. Please read it carefully, as it furnishes information which will help you achieve years of trouble-free operation.

Warranty/Parts/Service

Products are warranted for one year from date of purchase against manufacturer or workmanship defects.

Commercial users have a 90 day warranty.

Your authorized dealer is the best source of replacement parts and service. To obtain prompt, efficient service, always remember to give the following information...

- Correct Part Description and/or part number.
- Model number/Serial number of your sprayer.

Part descriptions and part numbers can be obtained from the illustrated parts list section(s) of this manual.

Whenever you need parts or repair service, contact your distributor/dealer first. For warranty work, always take your original sales slip, or other evidence of purchase date, to your distributor/dealer.

Technical Specifications

- 15 Gal. Corrosion-Resistant Polyethylene Tank
- 12 Volt Diaphragm Pump, 2.1 g.p.m. - 60 p.s.i. - 8 Amp
- Deluxe Pistol-Grip Handgun with 15 Ft. Handgun Hose
- 18 Ft. max. vertical throw, 30 Ft. max. horizontal throw
- Low Profile Trailer & Tank
- 4.10/3.50 x 6" Pneumatic Tires
- Pressure Gauge
- 3-Nozzle Boom Assembly

Assembly

Your sprayer has been partially assembled at the factory. Follow the instructions below to complete the assembly of this unit. (Refer to the exploded view drawing later in this manual)

1. Bolt the hitch brackets to the tongue tube.
2. Slide the axle through the frame holes, centering it as best as possible. Secure in place with the hardware shown.
3. Slide the spacers, and a wheel (valve stem out) onto each end of the axle, then use a hairpin cotter pin to secure the wheels in place.
4. Rotate the boom bracket so it is in the upright position. secure in place with bolt/nut shown.
5. Bolt the boom assembly to the boom bracket. The tips need to be approximately 18" above the spraying surface and are near that from the factory. Secure in place with (2) bolts and nuts provided.
6. Thread the pressure gauge into the end of the manifold assembly, next to the pump. Use a good grade of thread sealant, to insure no leaks.
7. Remove the drain plug and handgun clips from the parts bag and attach them to the tank, as shown.
8. Connect the electrical hook-up to the end of your pump and clip the clips to a fully charged battery. The red wire must be connected to the positive (+), and the black wire should be connected to the negative (-).



www.fimcoindustries.com

1000 FIMCO Lane, P.O. Box 1700, North Sioux City, SD 57049
Toll Free Phone: 800-831-0027 : Toll Free Fax: 800-494-0440

Form No. 1287 [5004782 (01/10)] Printed in the U.S.A.

Testing the Sprayer

NOTE:

It is **VERY** important for you to test your sprayer with plain water before actual spraying is attempted. This will enable you to check the sprayer for leaks, without the possibility of losing any expensive chemicals.

Add water to the tank & drive to the starting place for spraying. When you are ready to spray, turn the boom valve to the "on" position. This will start solution spraying from the tips of the boom. The pressure will decrease slightly when the boom is spraying. Adjust the pressure by turning the "ON/OFF" valve lever on the bypass line valve.

Read the operating instructions. When everything tests all right (no leaks, & good pressure), add the desired chemicals to the mixture and water combination and start your spraying operation. Adjust the pressure and spray as you did in the testing procedure.

Conditions of weather and terrain must be considered when setting the sprayer. Do not spray on windy days. Protective clothing must be worn in some cases.

Be sure to read the chemical label(s) correctly!

WARNING: Some chemicals will damage the pump valves if allowed to soak untreated for a length of time! ALWAYS thoroughly flush the pump with water after use. DO NOT allow chemicals to sit in the pump for extended times of idleness. Follow the chemical manufacturer's instructions on disposal of all waste water from the sprayer.

Operation

Your sprayer is equipped with (2) ON/OFF switches. One is on the wire assembly that you hook up to your battery, the other is on the pump itself, on the opposite end of the pressure switch. The "-" is the "ON" position and the "o" is the "OFF" position for the switches. Make sure both switches are depressed in the "-" position for operation.

In addition to the ON/OFF switch, the pump is equipped with an electronic pressure switch that is factory pre-set for it to shut off at 60 p.s.i.. This switch assembly is the 'square box' on the head portion of the pump.

Always fill the tank with a desired amount of water first, and then add the chemical slowly, mixing as you pour the chemical into the tank. You may use the handgun to spray into the solution in order to mix the chemical and water.

The pumping system draws solution from the tank, through the strainer/filter, and to the pump. The pump forces the solution under pressure to the handgun and/or boom nozzles.

- Open the handgun by squeezing the handle lever.
- Rotating the adjustable nozzle tip on the handgun will change the tip pattern from a straight stream to a cone pattern (finer mist).

Speed Chart			
	Time Required in seconds to travel a distance of:		
Speed in M.P.H. (Miles per Hour)	100 Ft.	200 Ft.	300 Ft.
1.0	68 sec.	136 sec.	205 sec.
2.0	34	68	102
3.0	23	45	68
4.0	17	34	51
5.0	14	27	41
6.0	11	23	34
7.0	9.7	19	29
8.0	8.5	17	26
9.0	7.6	15	23
10.0	6.8	14	20

Rate Chart for (No. 2) Spray Tip										
Tip No.	Spray Height	Pressure (psi)	Capacity (GPM)	Gallons Per Acre - Based on Water						
				1 MPH	2 MPH	3 MPH	4 MPH	5 MPH	7.5 MPH	10 MPH
2	18"	20	.14	41.8	20.9	14.0	10.5	8.4	5.6	4.2
		30	.17	51.2	25.6	17.2	12.9	10.3	6.9	5.1
		40	.20	59.2	29.6	19.8	14.9	11.9	7.9	5.9
		50	.23	66.4	33.2	22.2	16.6	13.3	8.8	6.6
Tip No.	Spray Height	Pressure (psi)	Capacity (GPM)	Gallons Per 1000 Sq. Ft. - Based on Water						
				1 MPH	2 MPH	3 MPH	4 MPH	5 MPH	7.5 MPH	10 MPH
2	18"	20	.14	.96	.48	.32	.24	.19	.13	.10
		30	.17	1.18	.59	.39	.30	.24	.16	.12
		40	.20	1.36	.68	.45	.34	.27	.18	.14
		50	.23	1.52	.76	.51	.38	.31	.20	.15
Tip No.	Spray Height	Pressure (psi)	Capacity (GPM)	Gallons Per 100 Sq. Ft. - Based on Water						
				1 MPH	2 MPH	3 MPH	4 MPH	5 MPH	7.5 MPH	10 MPH
2	18"	20	.14	.096	.048	.032	.024	.019	.013	.010
		30	.17	.118	.059	.039	.030	.024	.016	.012
		40	.20	.136	.068	.045	.034	.027	.018	.014
		50	.23	.152	.076	.051	.038	.031	.020	.015

Calibration

Chemical labels may show application rates in gallons per acre, gallons per 1000 square feet, or gallons per 100 square feet. You will note that the tip chart shows all 3 of these rating systems.

Once you know how much you are going to spray, then determine (from the tip chart) the spraying pressure (PSI), and the spraying speed (MPH).

Determining the proper speed of the pulling vehicle can be done by marking off 100, 200, & 300 feet. The speed chart indicates the number of seconds it takes to travel the distances. Set the throttle and with a running start, travel the distances. Adjust the throttle until you travel the distances in the number of seconds indicated by the speed chart. Once you have reached the throttle setting needed, mark the throttle location so you can stop and go again, returning to the same speed.

Add water and proper amount of chemical to the tank and drive to the starting place for spraying.

After Spraying

After use, fill the sprayer tank part way with water. Start the sprayer, and allow the clear water to be pumped through the plumbing system and out through the spray nozzles. Refill the tank about half full with plain water and use a chemical neutralizer, such as 'Nutra-Sol', or equivalent, and repeat cleaning instructions above. A mix of water and some good quality dish detergent would be a sufficient alternative. Flush the entire sprayer with the neutralizing/cleaning agent, then flush out one more time with plain water. Follow the chemical manufacturer's disposal instructions of all wash or rinsing water. For the boom, if applicable, remove the tips and screens from the nozzle assemblies. Wash these components thoroughly with water or cleaning solution appropriate for the chemical being used. Blow out the orifice clean, and dry. If orifice remains clogged, clean it with a fine bristle (NOT WIRE) brush, or with a toothpick. Do not damage the orifice. Water rinse and dry tips before storing.

CAUTION

PRESSURE SWITCH OPERATION

Pressure switch is pre-set at the factory. Improper adjustment of the pressure switch, may cause severe overload or premature failure. If the pump is subjected to rapid cycling during normal operation, or infrequent periods, damage may occur.

Winter Storage

Drain all water out of your sprayer, paying special attention to the pump, handgun, and valve(s). These items are especially prone to damage from chemicals and freezing weather.

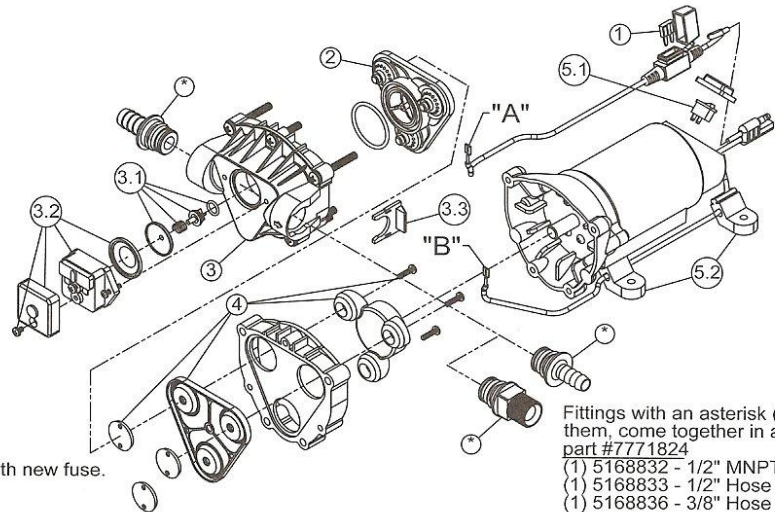
The sprayer should be winterized before storage by pumping a solution of RV antifreeze through the entire plumbing system. This antifreeze solution should remain in the plumbing system during the winter months. When spring time comes and you are preparing your sprayer for the spray season, rinse the entire plumbing system out, clearing the lines of the antifreeze solution. Proper care and maintenance will prolong the life of your sprayer.

WARNING

DO NOT USE PUMP IN AN EXPLOSIVE ENVIRONMENT. DO NOT USE TO PUMP FLAMMABLE FLUIDS, GASOLINE, KEROSENE, FUEL, OIL, ETC.

#5275703 Pump (12 Volt, 8 Amp, 2.1 gpm, 60 psi)

Item No	Part Number	Qty	Description	List Price
1	5157205	1	7.5 Amp Mini Fuse	3.99
2	5168820	1	Check Valve Kit (w/O-Ring)	19.95
3	5168837	1	Upper Housing Assembly	39.95
3.1	5168839	1	Plunger Kit	7.99
3.2	5157202	1	Pressure Switch Assembly	23.95
3.3	20408-000	1	Pkg. (2) Clips (Port Fitting)	3.41
4	5168838	1	Diaphragm/Cam/Bearing Kit	18.99
5.1	5157207	1	Rocker Switch	6.99
5.2	5095202	1	Mounting Feet (Pkg of 4)	4.99



Fittings with an asterisk (*) by them, come together in a bag, part #7771824
 (1) 5168832 - 1/2" MNPT
 (1) 5168833 - 1/2" Hose Barb
 (1) 5168836 - 3/8" Hose Barb

Troubleshooting the 2.1 g.p.m. Pump:

Pump will NOT run:

- Check inline fuse on the wires on the pump. If blown, replace with new fuse.
- Make sure BOTH on/off switches are in the 'on' (-) position.
- Make sure you 12 volt source (battery) is fully charged.
- Insure a tight connection at the battery clips.

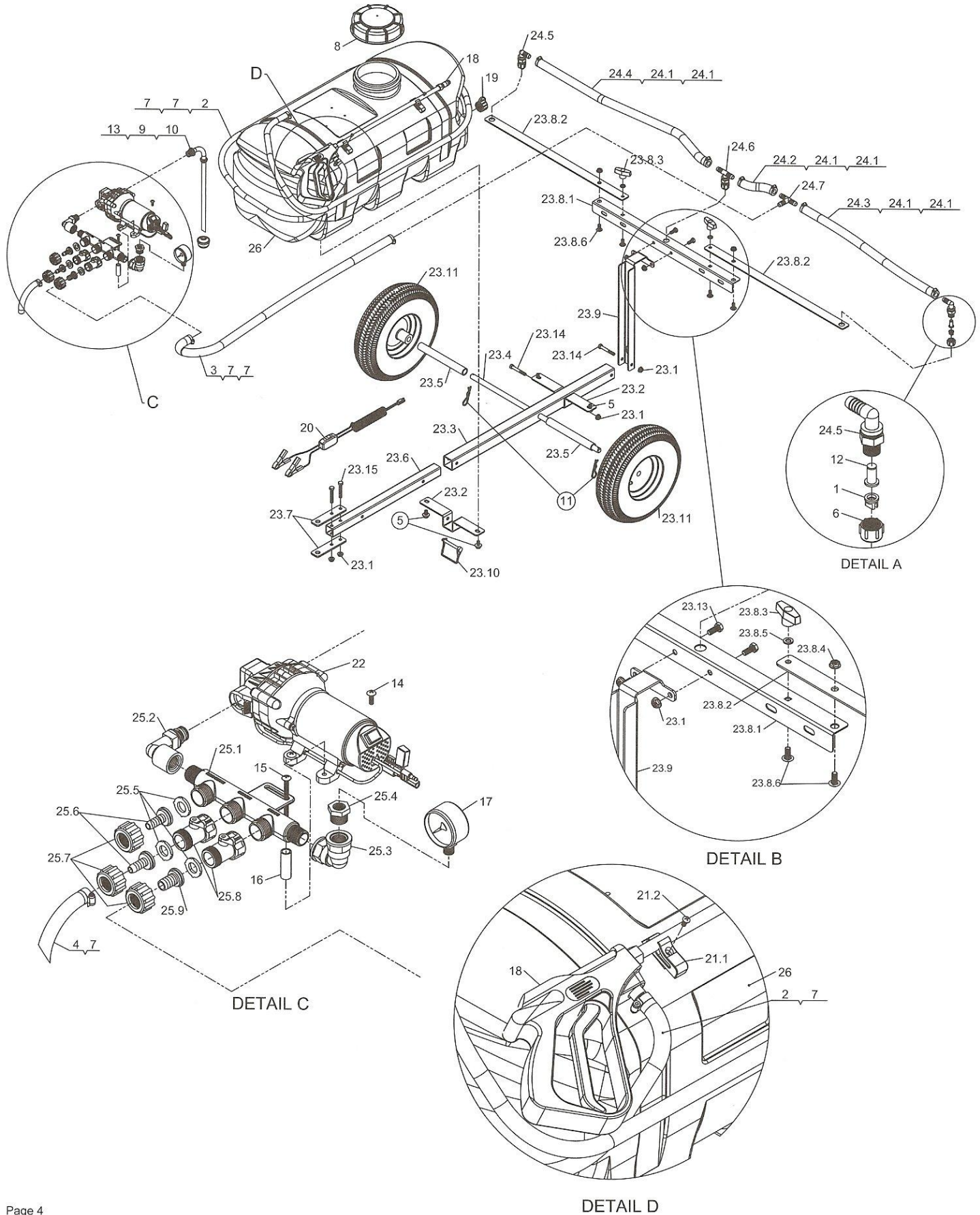
If none of the above will work, try pulling wire terminal "A" off of the spade terminal of the pressure switch, and cross it over and touch terminal "B". (You will need to remove the pressure switch cap before doing this) If your pump runs when you do this, you know you will need to replace your pressure switch.

Another thing you can try is to take apart the switch box on the lead wire assembly (#5274443) with the (2) phillips head screws, and 'hot-wire' it together. Take the (2) wires that are screwed to the rocker switch, off of the switch and twist them together. This will insure you are getting the full 12 volts to the pump. If your pump runs after doing this, you will know that your lead wire assembly needs to be replaced.

Pump runs, but does not prime:

- Check line strainer (screen) at the inlet location, at the tank. You will need to unscrew the knurled nut to access this screen. (see exploded view later in this manual) The ON/OFF valve should be closed while performing this, to insure you do not lose any solution. Periodically take the screen at this location out and clean it.
- Make sure the bypass line valve is closed, to allow the pressure to build up in your system.
- Unscrew the head portion of your pump and remove the check valve assembly from inside. You need to make sure the O-Ring comes out with this piece as well. (See the exploded view to help identify these components) These pieces can be cleaned which, in most cases, will help restore some, if not most, of your prime. Soak this check valve in a solution of hot water & a good quality brand of dishsoap. A little bit of 'scrubbing' with perhaps an old toothbrush may be required to actually break up any build-up that may be on the check valve. Rinse off the pieces and replace them back into your pump. Reassemble the pump. Hook it back up and test.

Exploded View Model: TR-15-STD-TSC (2137633)



Parts List Model: TR-15-STD-TSC (2137633)

ITEM NO.	PART NUMBER	QTY.	DESCRIPTION	LIST PRICE
1	5018328	3	Tip, Yellow (110 Degree)	.78
2	5020215	1	Hose, 3/8"-1 Brd. x 15 Ft.	8.50
3	5020389	1	Hose, 1/2"-1 Brd. x 43"	5.78
4	5020490	1	Hose, 3/8"-1 Brd. x 7 1/4"	1.25
5	5034531	4	5/16"-18 x 5/8" Flange Lock Screw	.44
6	5046052	3	Nylon Nozzle Cap, 11/16" U.N.F. Thread	.49
7	5051114	5	Hose Clamp (3/8"-1/2")	.63
8	5058189	1	5" Lid (NO Lanyard)	10.50
9	5075018	1	Grommet	1.00
10	5100525	1	90 Deg. Port Elbow with Tube (15 Gal Tank w/ O-Ring)	
11	5101065	2	Hair-Pin Cotter (0.120" Dia.)	.40
12	5116019	3	50 Mesh Nozzle Strainer, Red	1.11
13	5116251	1	Strainer, Suction Line	1.99
14	5117167	3	#10-24 x 5/8" Phillips Truss Head Machine Screw	.25
15	5117313	1	#10-24 x 2 1/2" Truss Head Machine Screw	.25
16	5127191	1	Manifold Spacer (2.1gpm)	.40
17	5167007	1	Gauge, 0-100 p.s.i.	6.25
18	5273959	1	Handgun w/X-26 Tip	24.95
19	5274373	1	Drain Plug Cap, Tether, and Washer Assembly	2.95
20	5274443	1	Lead Wire Assembly (w/Switch), 96"	9.99
21.1	5053096	2	Handgun Clip, for Blow-Molded Tanks	.95
21.2	5117293	2	#10-24 x 3/8" Phillips Round Head Machine Screw	.25
22	5275703	1	Gold Series 2.1 g.p.m. Pump	112.00
23.1	5006307	6	5/16"-18 Hex Whiz (Flange) Locknut	.25
23.2	5133268	2	Trailer Frame Strap (15/25 Gal)	
23.3	5070072	1	Hitch Tube Frame	
23.4	5024120	1	Axle (5/8" Dia.)	5.99
23.5	5041166	2	Bushing	
23.6	5100538	1	Hitch Tube	
23.7	5027155	2	Hitch Plate	
23.8	5277073	1	3-Nozzle Boom (w/Breakaway)	
23.8.1	5022420	1	Boom Mount Angle	
23.8.2	5023107	2	Boom Arm	
23.8.3	5088025	2	T-Knob	
23.8.4	5006307	2	5/16"-18 Hex Whiz (Flange) Locknut	.25
23.8.5	5016026	2	Lockwasher, 5/16"	.25
23.8.6	5034578	4	Carriage Bolt, 5/16"-18NC x 3/4"	
23.9	5038770	1	Boom Mount Bracket	
23.10	5101302	1	D-Ring Lock Pin 5/16" x 2 3/4"	
23.11	5021102	2	4.10/3.50-6 Wheel (White) w/2 1/4" Offset & 5/8" BB	29.95
23.12	5101077	2	Cotter Pin, 1/8" x 1"	.25
23.13	5034038	2	H.H.C.S., 5/16"-18 x 3/4"	.55
23.14	5034040	2	H.H.C.S., 5/16"-18 x 2 1/4"	.25
23.15	5034082	2	H.H.C.S., 5/16"-18 x 2" (Full Thread)	.47
24	5277149	1	Nozzle Harness (TR-15-STD-TSC)	
24.1	5051114	6	Hose Clamp (3/8"-1/2")	.63
24.2	5020022	1	Hose, 1/2"-1 Brd. x 4 1/2"	.84
24.3	5020365	1	Hose, 1/2"-1 Brd. x 24"	2.41
24.4	5020029	1	Hose, 1/2"-1 Brd. x 29"	2.67
24.5	5056023	2	Nylon Elbow Assembly, 11/16" U.N.F. x 1/2" HB	1.54
24.6	5056027	1	Nylon Tee, 11/16" U.N.F. x 1/2" HB-1/2" HB	1.63
24.7	5086003	1	Nylon Hose Tee, 1/2" HB	1.06
25	5277179	1	Manifold Assembly	
25.1	5143405	1	Manifold w/Mounting Tab	6.99
25.2	5010430	1	Port Kit Elbow, 1/2" FNPT	2.79
25.3	5010236	1	Poly Elbow, 1/2" FNPT x 1/2" FNPT	2.07
25.4	5041073	1	Poly Reducing Bushing, 1/2" MNPT x 1/4" FNPT	1.24
25.5	5016066	3	Garden Hose Washer	.20
25.6	5149034	2	Poly Swivel, 3/8" Hose Barb	.64
25.7	5006209	3	Poly Knurled Swivel Nut, 3/4" FGHT	.70
25.8	5143188	2	Nylon Shut-Off Valve	3.14
25.9	5149035	1	Poly Swivel, 1/2" Hose Barb	.50
26	TA15W	1	15 Gallon Tank (White)	62.24

(List Prices are Subject to Change)